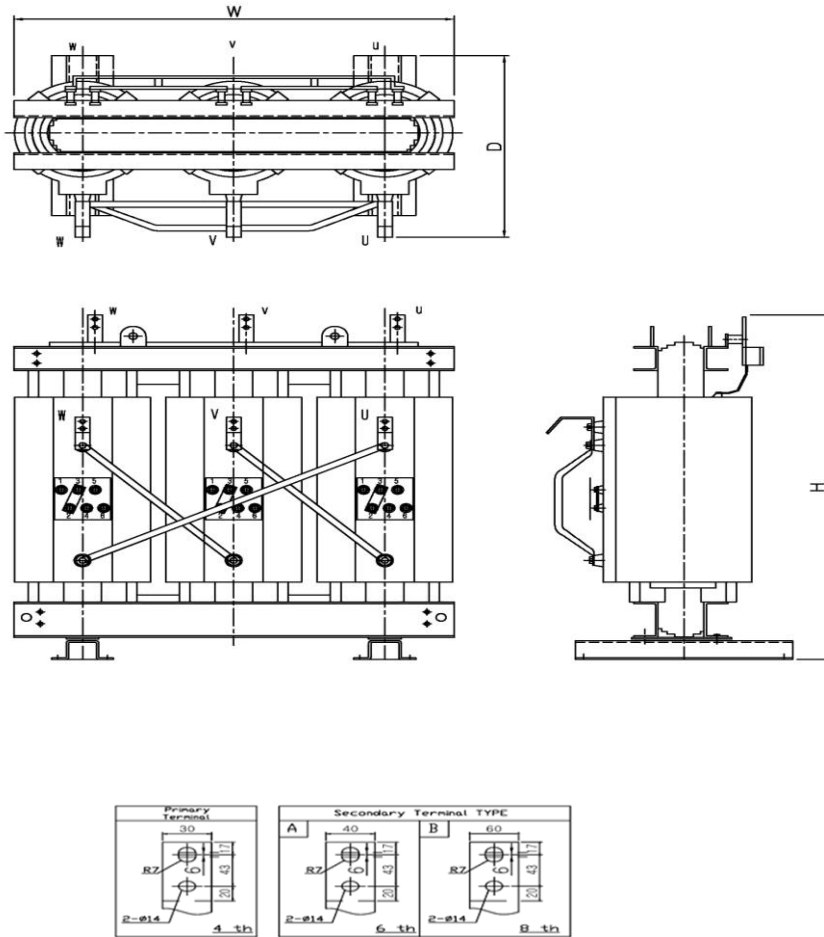


SPECIFICATION [SM-SAHH] (Standard consumption efficiency)



3P 22.9kV/6.6 or 3.3kV

Capacity	% IZ	Efficiency (Load Rate)		No load current	Voltage fluctuation rate	External dimensions(mm)			Weight	LV terminal	
(kVA)	(%)	50%	100%	(%)	(%)	W	D	H	(KG)	T * W	Type
500	6.5	99.25	99.0	1.0	1.6	1695	890	1590	2100	6t*40	A
750	7.5	99.30	99.1	1.0	1.3	1850	960	1885	2800	6t*40	A
1000	6.5	99.40	99.2	1.0	1.3	2030	970	1885	3500	6t*40	A
1250	6.5	99.40	99.2	1.0	1.2	2030	1010	1945	3900	6t*40	A
1500	6.5	99.50	99.3	1.0	1.0	2105	1045	2190	5200	6t*40	A
2000	6.5	99.50	99.3	1.0	1.0	2105	1060	2190	5700	8t*60	B
2500	6.5	99.50	99.3	1.0	1.0	2270	1060	2365	7100	8t*60	B
3000	6.5	99.50	99.3	1.0	1.0	2270	1060	2365	7700	8t*60	B

* The above excess capacity and unwritten SPEC. can also be manufactured by order.